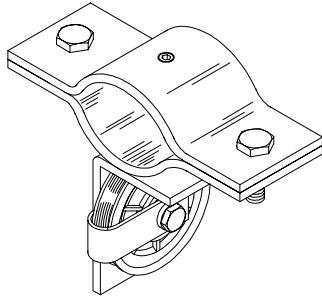


## 48 SERIES CONTOUR CURTAIN RIGGING

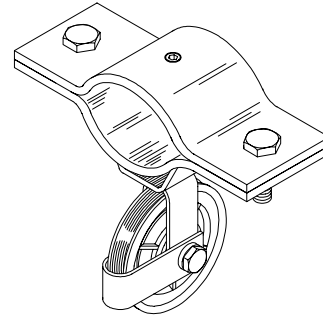
Special light duty pulleys are housed in assemblies designed to mount to 1-1/2" pipe batten, providing a method of rigging contour curtains whether they are straight, curved or serpentine in layout. Idler sheaves may be added to guide cables around curves.



### No. 48 CONTOUR CURTAIN PULLEY

2-1/2" Nylatron GS sheave with shielded ball bearing in steel housing for mounting to pipe.

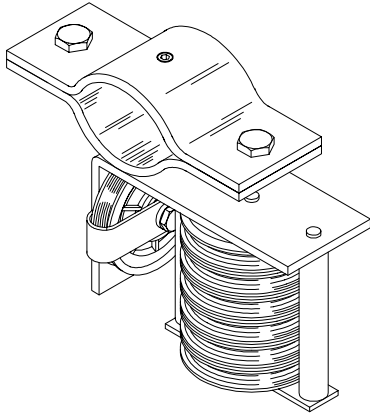
Working load limit: 25#



### No. 48S CONTOUR SWIVEL PULLEY

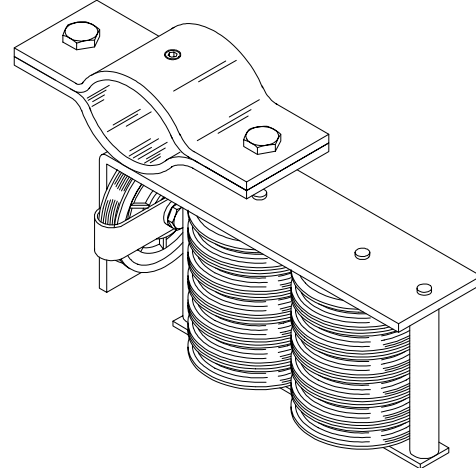
2-1/2" Nylatron GS sheave with shielded ball bearing in steel housing for mounting to pipe. Sheave swivels 360 degrees.

Working load limit: 25#



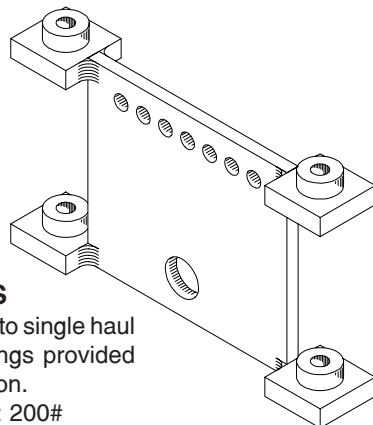
### No. 48-6 CONTOUR PULLEY WITH 6 IDLERS

No. 48 contour curtain pulley with the addition of 1 column of horizontal idler sheaves. Suffix indicates number of idler sheaves, up to 6.



### No. 48-12 CONTOUR PULLEY WITH 12 IDLERS

No. 48 contour curtain pulley with the addition of 2 columns of horizontal idler sheaves. Suffix indicates number of idler sheaves, up to 12.



### No. 42 WIRE GUIDE CLEWS

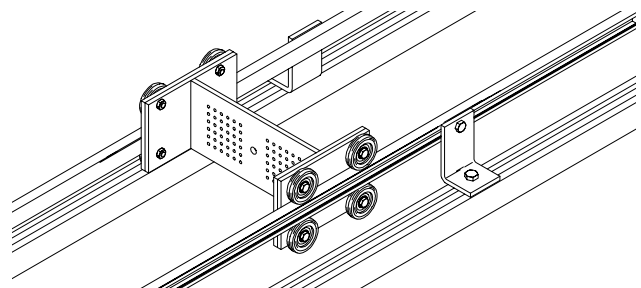
Clews combine lift lines into single haul line. Nylatron GS bushings provided for smooth, quiet operation.

Working load limit: 200#

42-6 - 6 lift lines.

42-12 - 12 lift lines.

For clews with higher working loads, please consult factory.

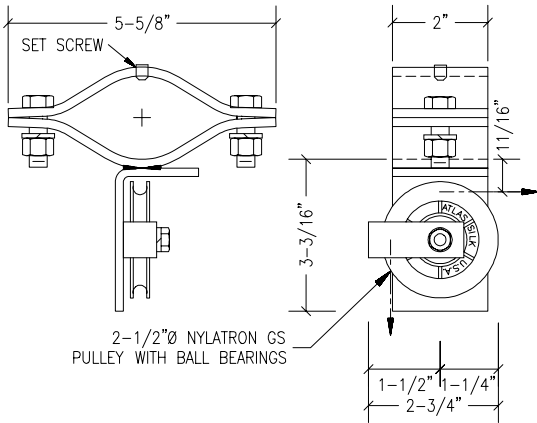


### No. 43 ROLLER GUIDE CLEW

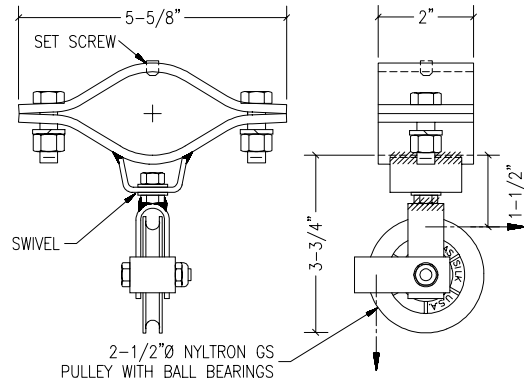
Multi-line clew constructed of 1/4" steel plate supported by 8 neoprene-tired ball bearing wheels. HDPE glide strips reduce friction and noise along a rigidly supported C-channel frame. Suffix indicates clew travel in feet.

No. 43x15 - 15 foot clew travel. No. 43x25 - 25 foot clew travel. No. 43x20 - 20 foot clew travel. No. 43x30 - 30 foot clew travel.

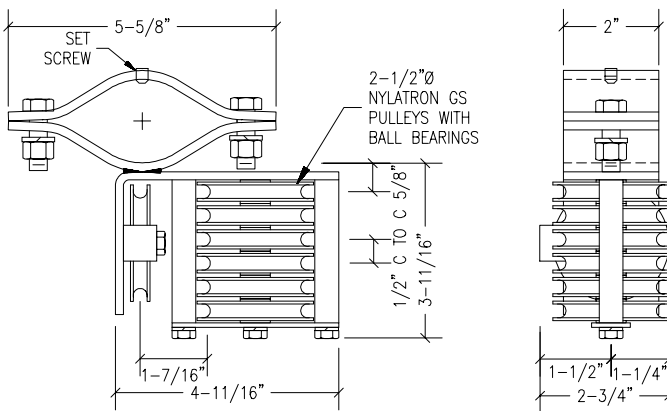
## DIMENSION DRAWINGS



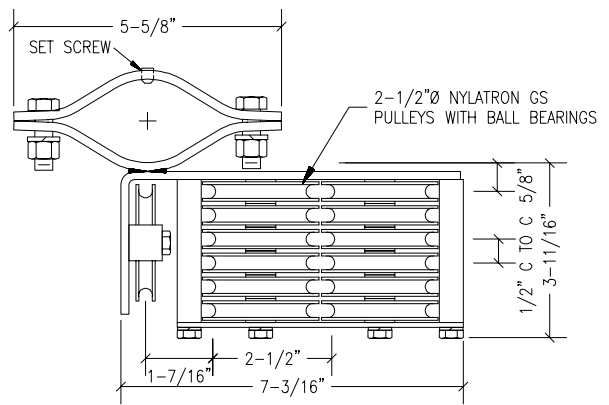
**No. 48 Series Contour Pulley**



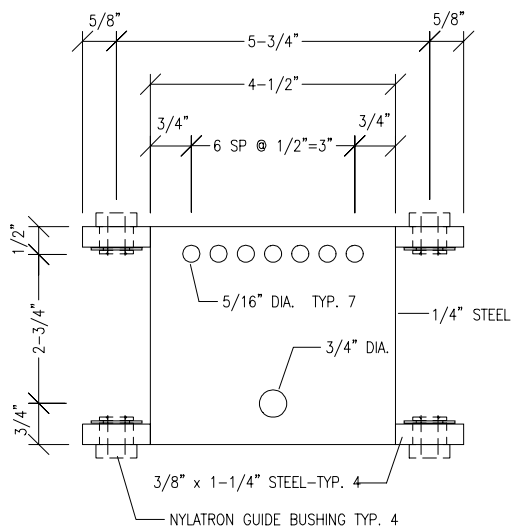
**No. 48S Contour Swivel Pulley**



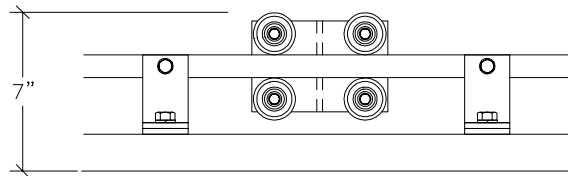
**No. 48-6 Contour Pulley**



**No. 48-12 Contour Pulley**



**No. 42-6 Wire Guide Clew**



**No. 43 Roller Guide Clew**